

Understanding the At-Risk Population in Your Community

Safeguarding, informing and updating your residents is essential when an emergency strikes.

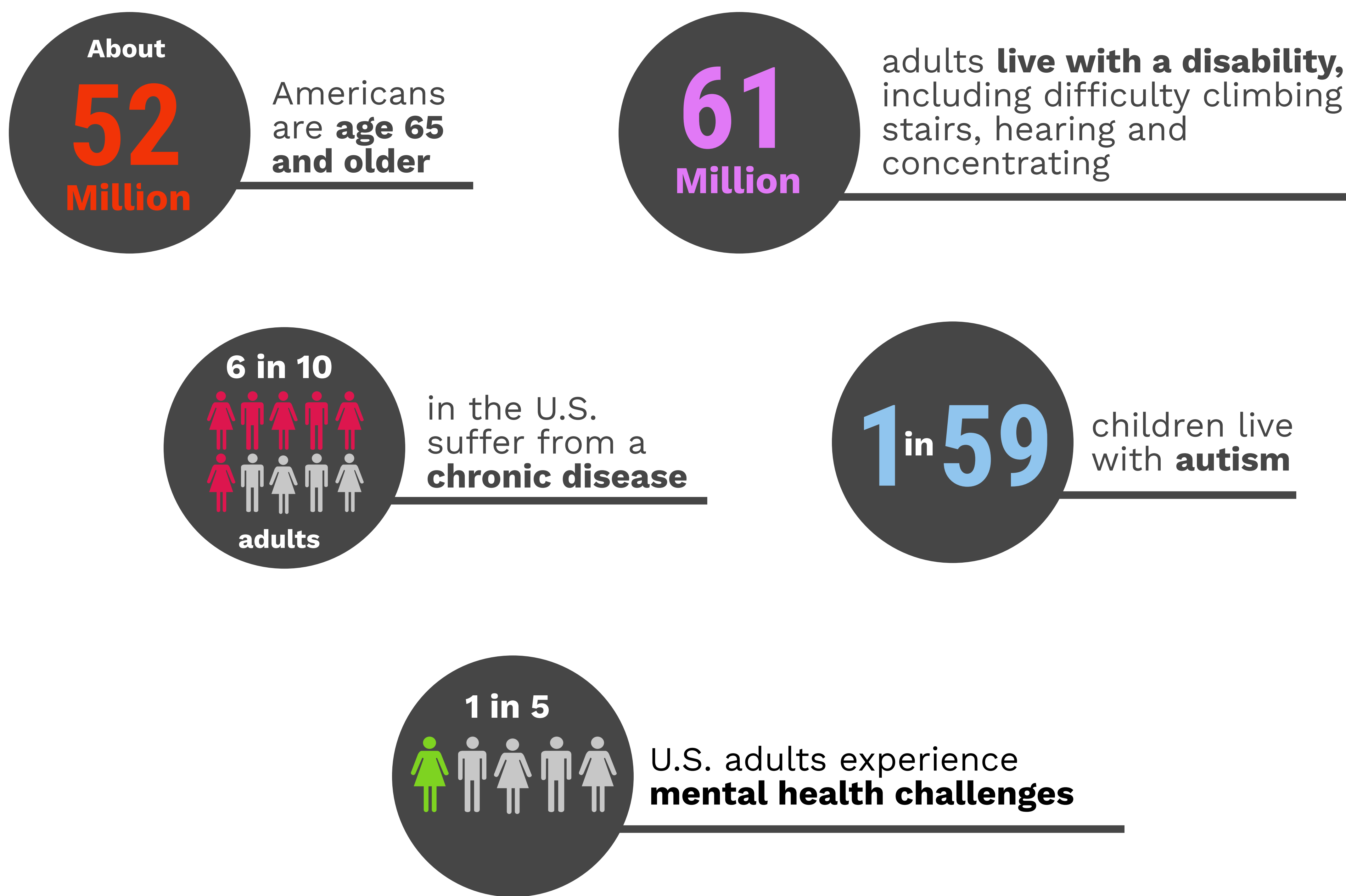
This is even more critical for your community's at-risk residents. Understanding who they are and what their challenges are will help you better prepare for, respond to and recover from a critical event.



What Are At-Risk Populations?

Individuals with access and functional needs (temporary or permanent) who may have limitations to access or receive medical care before, during or after a disaster or public health emergency.

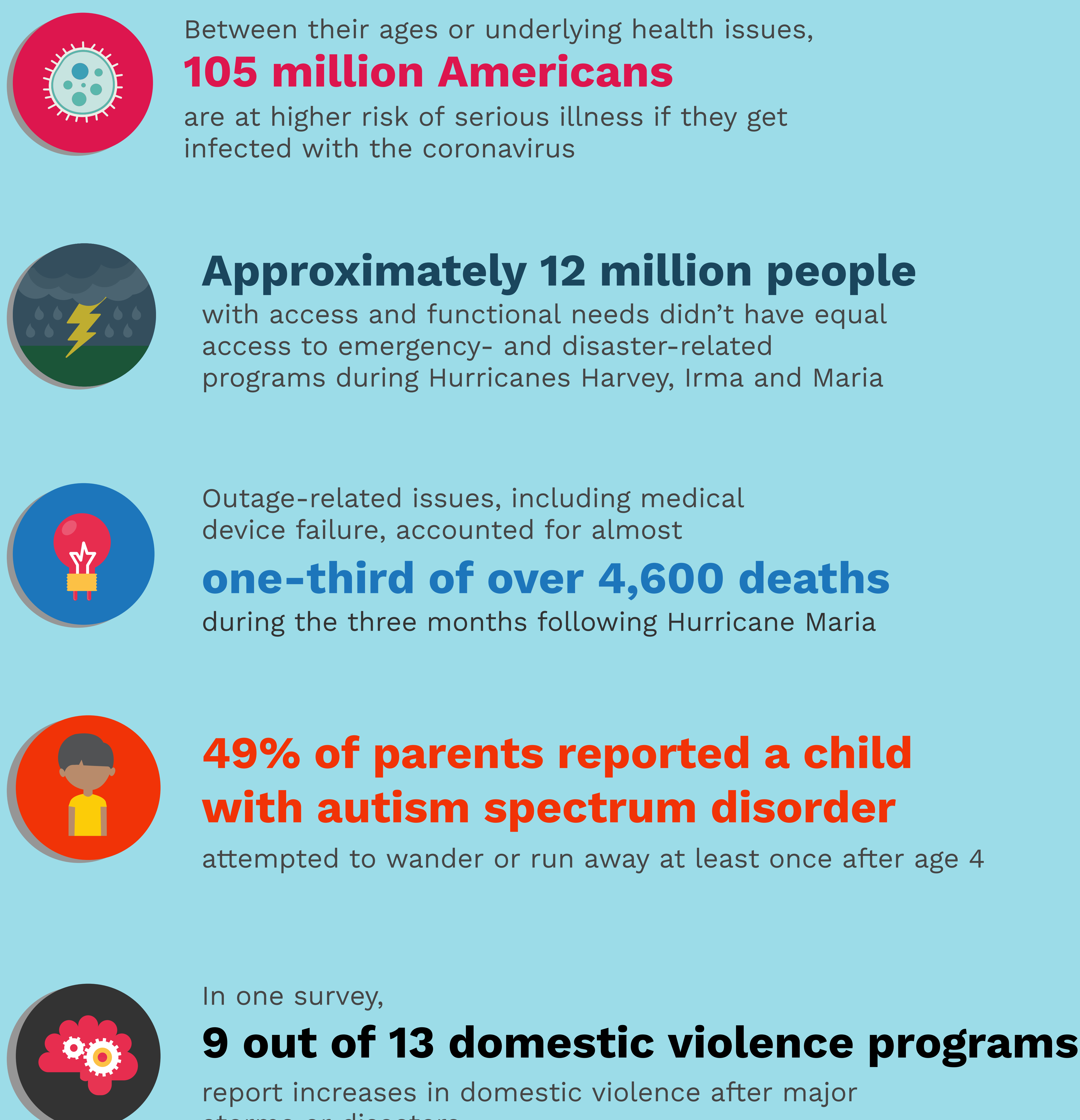
Who Is Part of Your At-Risk Population?



Identifying at-risk residents in your community

would help public health personnel, emergency managers, 9-1-1 teams and first responders have **better situational awareness and coordination during an emergency, as well as prioritize resources.**

How At-Risk Populations Have Been Impacted by Critical Events



Collaborating with your at-risk residents during an emergency

allows you to **share vital information**, as well as **receive updates on their current status and situation**. This will also allow you to strengthen your coordination and response within your department and with other agencies.

Discover best practices and resources you can implement to identify and communicate with your at-risk residents before, during and after an adverse event.

[DOWNLOAD GUIDE](#)

