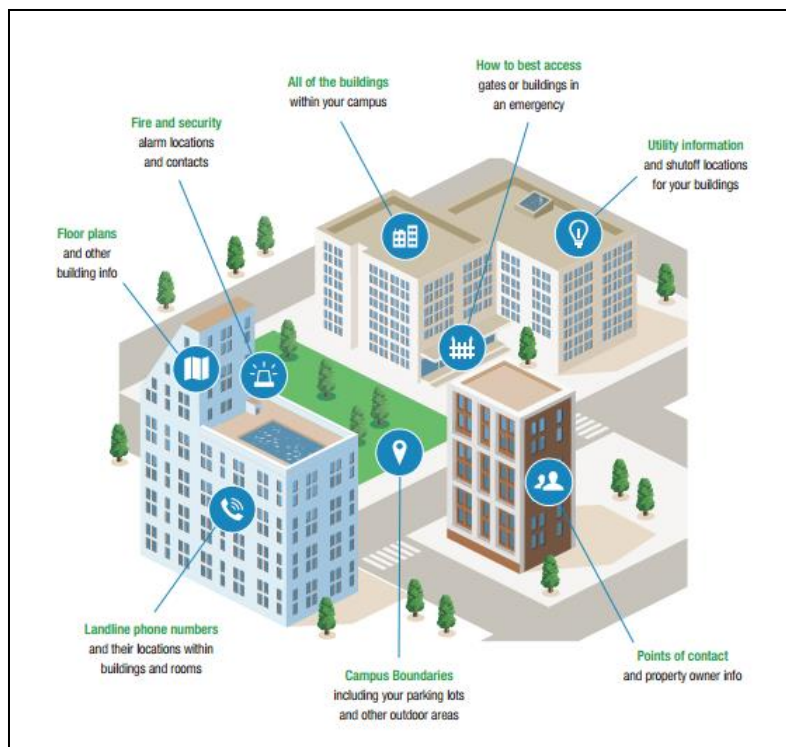


Rave Facility

Best Practices Guide

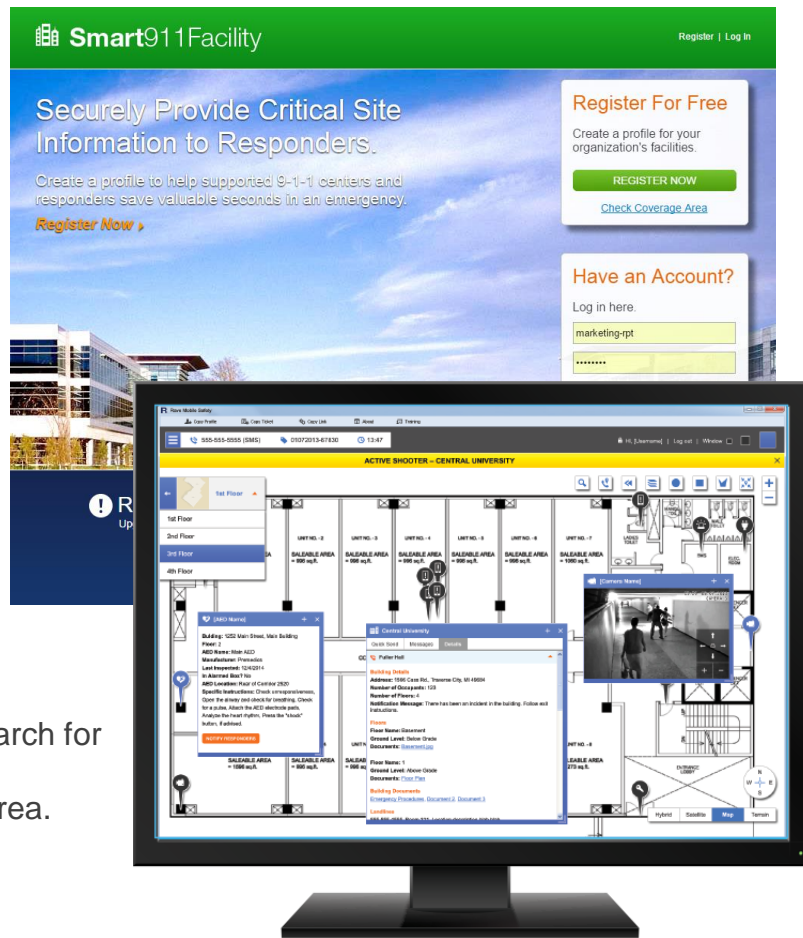


Rave Facility is a great way to obtain additional premise information for facilities, campuses and other large structures in your community during an emergency call.

This guide will contain information on who to reach out to, how to explain Rave Facility and tools to encourage them to create a profile.

What is Rave Facility?

Rave Facility is a feature within Smart911 that allows for a profile to be created for any type of facility or campus at www.ravefacility.com. When any call, landline or mobile dials 9-1-1 from within the geographical boundaries of that location (as determined by the facility profile) the profile will immediately display within the Smart911 console to the 9-1-1 dispatcher. In addition, a dispatcher can search for the profile of a facility by name within their area.



Facility managers create Facility Profiles at www.ravefacility.com

Profile Can Include:

- Multiple buildings within a campus
- Point(s) of contact on site
- Fire alarm contact
- Security alarm contact

- Property owner contact information
- Gates or access codes
- Geographical boundaries including parking lots
- Floor plans of each building
- Landline phone numbers within a building

Who Is The Target Audience?

Local facility owners and administrators of a business, government, healthcare or educational organization are ideal candidates to create a Rave Facility profile.

Top Rave Facility Users:

- Schools
- Hospitals or Medical Centers
- Strip malls or large retailers (Consider facilities such as Home Depot, Target or Supermarkets)
- Colleges
- Hotels
- Large corporations or corporate office parks (These are often managed by a property management firm)

Why Should They Create a Profile?

Emergency calls come from within large facilities or campuses every day, from landlines and mobile phones. Whether it is an employee, customer or visitor in that location; having the information to reach their exact location within the facility as well as access points, points of contact and maps can cut seconds and minutes off of the response time. A Rave Facility profile can help protect both people and places.

Specific Use Cases:

Fire: a profile can contain evacuation routes, exits in a building, stairwells and elevators, on-site contacts and the closes hydrants in order to safely evacuate and respond to a fire or other hazard on-site

Medical emergency: a profile can contain access points to the location, location of AEDs on-site, and who to contact on-site

Active Shooter or Other Incident: a profile can contain exits, floorplans, on-site contacts and surrounding parking lots and roads in order to lock down or evacuate a location quickly

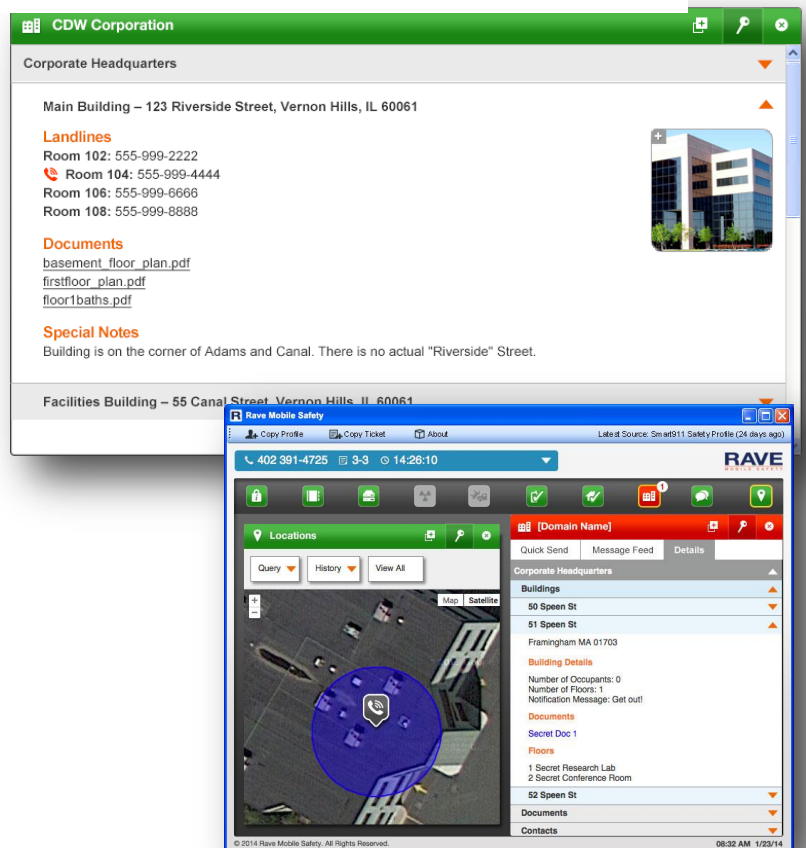
Smart911 Facility Outreach Materials

Outreach Partners

- Fire Department
- Business Licenses
- Building permits
- Chamber of Commerce

Community Partners

- Schools
- Senior centers
- Hospitals & medical centers
- Retail stores
- Office buildings
- Hotels
- Churches
- www.ravefacility.com



Consider working with Chamber of Commerce and Town authorities to require the creation of a Facility profile for building permits or make it a city ordinance.

Marketing Materials:

- Video
- Flyers
- Tri-fold brochure
- Business Cards
- Logo
- Web badges